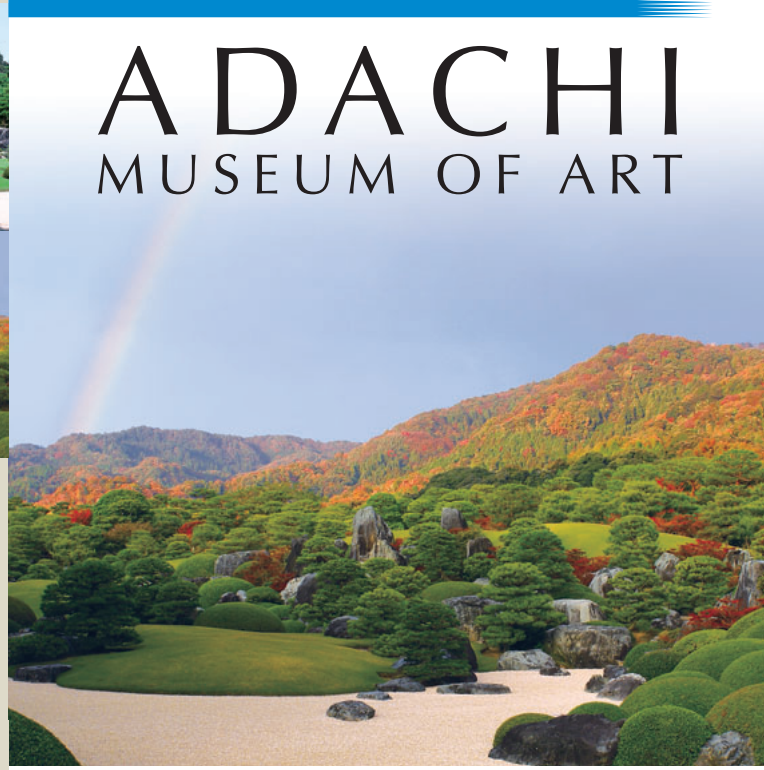


ENGLISH (英語)

ADACHI MUSEUM OF ART



JAPAN

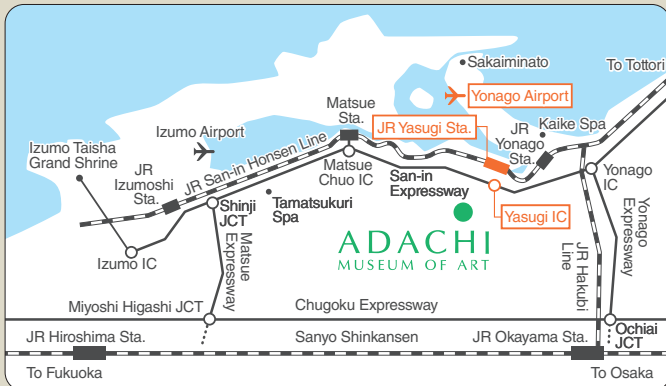
Shimane

● Hours ●

April~September/9:00AM~5:30PM
October~March/9:00~5:00PM • Open year round



Adachi Museum of Art
International Tourist Information Desk



ADACHI MUSEUM OF ART

320 Furukawa-cho, Yasugi, Shimane 692-0064 TEL.(0854)28-7111 FAX.(0854)28-6733
[Osaka Office] 2-4-3 Minamihonmachi, Chuo-ku, Osaka 541-0054 TEL.(06)6264-0737
[Tokyo Office] 1-2-13-C302 Nishiiazabu, Minato-ku, Tokyo 106-0031 TEL.(03)6434-7300
<http://www.adachi-museum.or.jp/en>

A Parking lot for cars and buses is available free of charge.



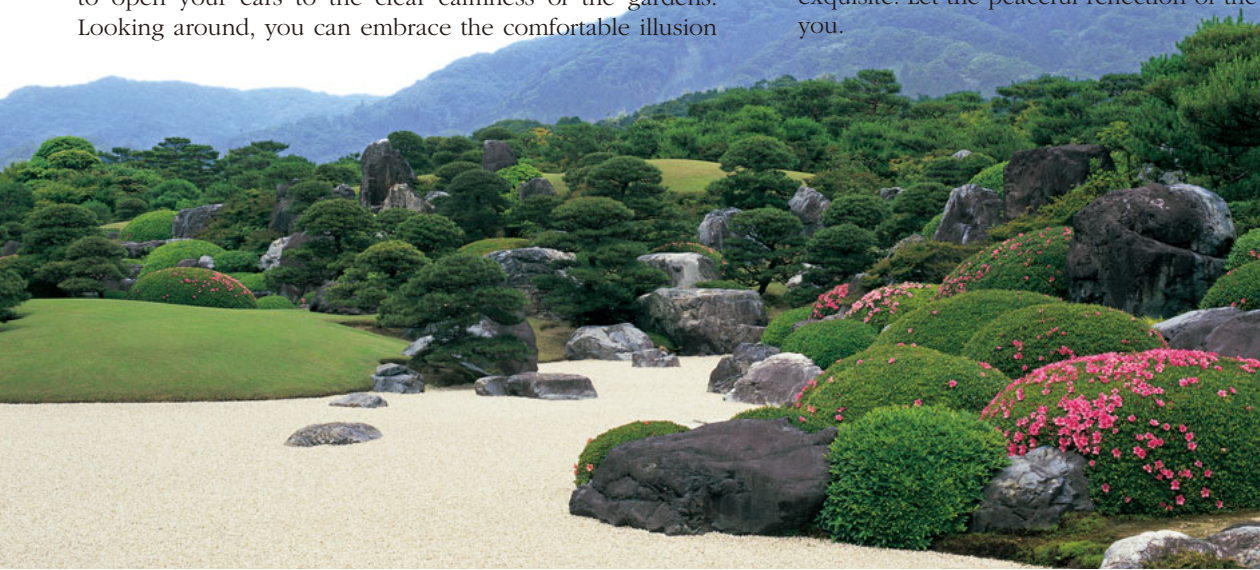
ADACHI MUSEUM OF ART

Time for Great Gardens

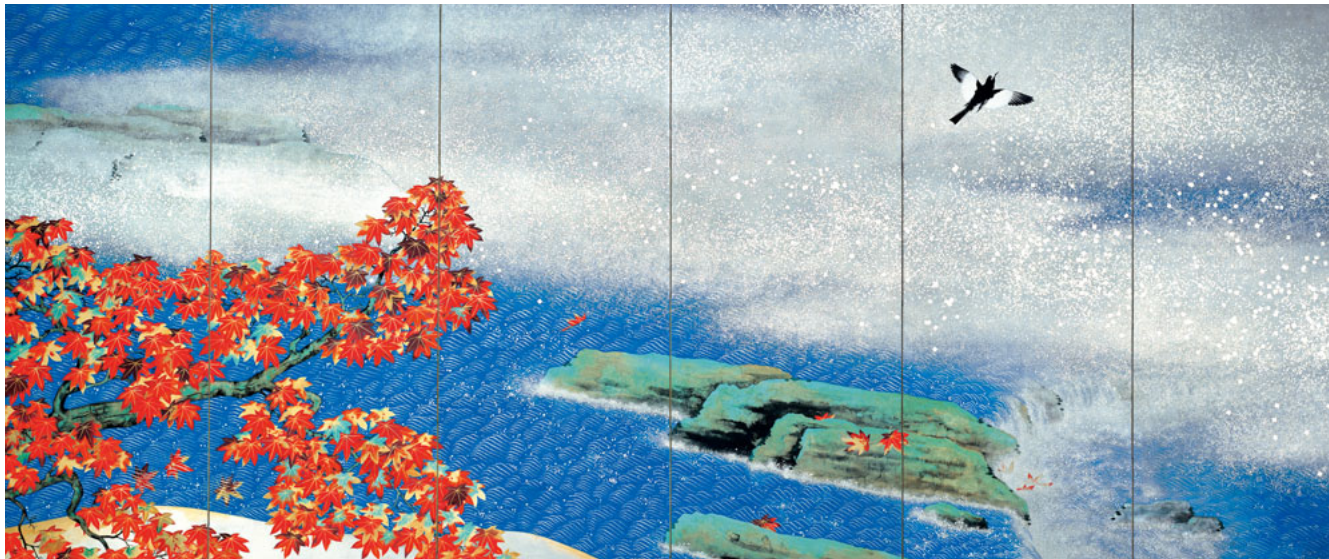
Time for Great Paintings

It's time to appreciate the changing colors of the seasons on the back of mountains with high fog rising. It's time to be impressed by the great masters' brush strokes, and it's time to open your ears to the clear calmness of the gardens. Looking around, you can embrace the comfortable illusion

of being in the picture frame. The harmony between the 165,000 square meters of gardens and modern Japanese paintings, including the Yokoyama Taikan Collection, is exquisite. Let the peaceful reflection of the museum refresh you.



A Part of Garden: The Dry Landscape Garden in Spring



Yokoyama Taikan: Autumn Leaves (Right Screen 1931)

Great Gardens

Harmony between Aesthetic Gardens and Japanese Paintings

According to our founder Adachi Zenko, "A Japanese garden is thought of as a living canvas." His belief and passion for gardening have been vividly applied throughout the 165,000 square meters of gardens. From the Dry Landscape Garden to the White Gravel and Pine Garden, the Moss Garden and the Pond Garden, the calm and graceful view expands before you at each step. The combination of such a restful atmosphere and Japanese paintings in the building refresh our visitors' spirits. Azaleas in spring, fresh greenery in summer, red leaves in autumn, and snow-covered gardens in winter – throughout the four seasons, the changing scenes of the gardens are enjoyable.



The window itself is a "Living Canvas." The garden through this window is canvas that shows different characteristics with the shifting sunlight and with each season. It is reminiscent of a Rinpa School folding screen.

庭園日本一

The Journal of Japanese Gardening

The Adachi Museum's gardens have been ranked as number one in the "Japanese Garden Ranking" since 2003. The ranking includes more than 900 places throughout Japan, including historical sites, and was compiled by "The Journal of Japanese Gardening", a US magazine that focuses on Japanese gardens.



The Dry Landscape Garden in Autumn

Features of the Gardens

The White Gravel and Pine Garden in Summer ●This garden beautifully expresses the atmosphere of Yokoyama Taikan's masterpiece, "White Gravel and Pine Garden." The contrast between the white gravel and the greenery of the pine trees is impressive.

The Moss Garden ●As the day dawns, the pine trees are outlined in the darkness. The elegant Moss Garden is soon embraced by morning freshness.



The Pond Garden in Winter ●The clear water gently ripples, as if setting the Yokoyama Taikan Special Exhibition Room afloat. The surface of the water is clear and fresh like a mirror, reflecting the snow-covered trees in the garden.



Living Canvas

●A window has been placed in the wall here. Visitors can look at the garden over the house through the window, as if watching a living painting. This is a major feature of the museum.



The Kikaku Waterfall ●This magnificent 15-meter waterfall can be seen over the garden. It brings a rush of cool air in spring and summer, and the dignity of quiet mountains in autumn and winter.



Great Paintings

Paintings by Modern Japanese Masters, Together

Adachi Museum of Art houses about 1,500 works by great masters, who flourished in the modern Japanese art world, including Yokoyama Taikan, Takeuchi Seiho, Kawai Gyokudo, Uemura Shoen, Hashimoto Kansetsu and Sakakibara Shiho, taking turns displaying them at the four special, seasonal exhibitions. The museum is distinguished by its Taikan collection of 120 works, of which around 20 different works are always displayed. We believe that you will enjoy the distinct artistic styles of these masterpieces, as well as the beautiful gardens.



Yokoyama Taikan:

Yokoyama Taikan was instructed by Okakura Tenshin at Tokyo Fine Art School. He helped to establish the Japan Art Institute, together with Tenshin and Hishida Shunso. Later, he re-established the Institute. He is best known for *suiboku-ga* and deeply colored paintings. From the Meiji to Taisho and Showa eras, he built the base of the modern Japanese art world.



Yokoyama Taikan: Mountain after a Shower
(from Twenty Scenes of Mt. Fuji and The Sea 1940)



Yokoyama Taikan: Winter
(from Twenty Scenes of Mt. Fuji and The Sea 1940)



Yokoyama Taikan: Autumn Leaves (Left Screen 1931)



Yokoyama Taikan: Selflessness (1897)

Part of The Museum's Collection



Uemura Shoen: Daughter Miyuki (1914)



Yasuda Yukihiro: Wang Zhaojun (1947)



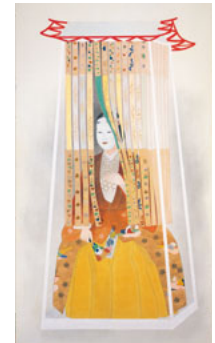
Sakakibara Shiho: Peonies (1938)



Hashimoto Kansetsu: Dogs from Europe
(Right Screen 1941)



Kawabata Ryushi: Passion (1934)



Kobayashi Kokei:
Yang Guifei (1951)



Takeuchi Seiho: After a Shower (Left Screen 1928)

Major Artists

Yokoyama Taikan,
Takeuchi Seiho,
Hashimoto Kansetsu,
Sakakibara Shiho,

Kawai Gyokudo,
Kawabata Ryushi,
Uemura Shoen,
Ito Shinsui,
Kaburagi Kiyokata,

Terashima Shimei,
Hishida Shunso,
Hayami Gyoshu,
Imamura Shiko,
Kobayashi Kokei,

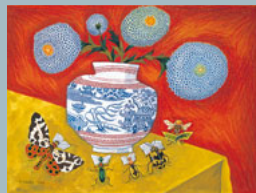
Yamamoto Shunkyo,
Tomioka Tessai,
Tsuchida Bakusen,
Murakami Kagaku,
Irie Hako,

Nishiyama Suisho,
Kikuchi Keigetsu,
Nishimura Goun,
Yasuda Yukihiro,
Tokuoka Shinsen,

Omoda Seiju,
Maeda Seison,
Yamaguchi Kayo.

Dream World; Pictures for Children

Adults will reminisce about childhood and relive good memories. The pictures for children always give a warm and relaxed atmosphere. The Adachi Museum of Art houses many works by Takei Takeo, Hayashi Yoshio, Kawakami Shiro, Kurosaki Yoshisuke, Suzuki Toshio and Iguchi Bunshu. The paintings are always on display in the Pictures for Children Exhibition Room.



Takei Takeo:
Book Club



Hayashi Yoshio:
Clown



Hayashi Yoshio:
Angel Taking a Nap



Suzuki Toshio:
Angels Frolicking around
an Elephant

Ceramic Works

Aesthetic Spaces for Great Modern Japanese Ceramists

Kitaoji Rosanjin, known as a skilled cook and ceramist, and Kawai Kanjiro, a “poet of blaze” born here in Yasugi City. Adachi Museum hosts an extensive collection of ceramic works by those two great masters. In particular, the Rosanjin collection is rich in quality and quantity, comprising about 400 works, being one of the museum’s attractive features. We aim to display a variety of these two proud masters’ works, in order to allow visitors to appreciate them in a calm, relaxed atmosphere. The resonance behind the works is also a large part of the overall experience.

[Second Floor] Kitaoji Rosanjin

“Good food should be served on good dishes. A real diet should be taken with a good hanging scroll and attar of flowers in a proper vase.” —He is a chef who also worked on crafts. He owned a Japanese restaurant, where he aimed to combine the best in all facets of his life, including taste and dignity. Rosanjin succeeded in establishing a comprehensive, aesthetic world surrounding cooking.



Kitaoji Rosanjin:
Bowl with Design of “Unkin
(Cherry Blossoms and Maple Leaves)” (1941)



Kitaoji Rosanjin:
Bamboo-Shaped Flower Vase,
Oribé (1951)

[First Floor] Kawai Kanjiro

Kawai Kanjiro was born in Yasugi City. In his first personal exhibition, he was praised as an ingenious ceramist. However, he believed that there were no better aesthetics than those of utensils made by unknown craftsmen. Based on this thought, he joined the folk art movement of Yanagi Soetsu, and contributed as a core member. He produced various works using a wide range of materials, including wood, metal, bamboo, straw and stone. Kanjiro created his own world, successfully expressing the “anthem” of human life in his works.

◆ Coming Soon ◆

Rosanjin Hall Opens in Spring 2020



Appearance

Through a Japanese red-pine grove, a storehouse peacefully stands at the end of stone pathway—we designed Rosanjin Hall to evoke this imagery.



Exhibition Room

In the exhibition room, light fixtures will be set on the wall above the showcases. The light reflected on the ceiling will soften and gently embrace the works.

Annex

Aesthetics of Contemporary Japanese Paintings

Adachi Museum of Art also has focused on collecting contemporary Japanese paintings by painters of the Japan Art Institute (Inten), which Taikan and other painters established and later made efforts to re-establish. Our collection of about 250 contemporary paintings includes “Adachi Museum of Art Award”-winning works and masterpieces by Miyasako Masaaki and other painters who currently lead the Japanese art world. In the Annex, we display different works at different times, and every autumn, we hold the “Re-Established Inten” exhibition, displaying new works by regular Inten members and other works accepted by the Institute. We hope you will enjoy the aesthetics of these modern and contemporary Japanese paintings.



Art Theater

The two-story annex has an exhibition room on each floor, and displays 50 – 100 works in total. On the first floor, there is also an Art Theater where patrons can see explanations of the exhibited works, as well as lectures and films.



Miyasako Masaaki: Phase Space (2017)



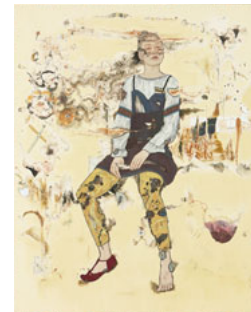
Miyakita Chiori: Whole Life of Empress (2015)



Matsuo Toshio:
Good Bye, Venice (2013)

Adachi Museum of Art Award

The Adachi Museum of Art Award was established in 1995, the museum's 25th anniversary, in order to develop Japanese art and as part of the museum's desire to nurture promising Japanese painters. Every September, the museum selects the best, appropriated work, from among those in the Inten, and purchases it. We hope the works that have won, and those that will win in the future, keep a prominent place in the modern Japanese painting world, and that these works will act as the “new faces” representing the museum.



Kunishi Hanako:
Sound of Invisible Things (2016)

Museum Information



Museum Shop (Main Building)

● Great paintings and gardens will leave a lasting impression. The museum shop has a range of original products, including picture postcards, *shikishi*, reproductions, and art books.



Museum Shop (Annex)

● The modern-yet-traditional Japanese-style shop on the first floor of the Annex has a large collection of contemporary Japanese painting goods as well as reproductions and snacks.



Cafe 'Midori'

● Cafe 'Midori' is a gorgeous tea room offering an impressive view of the Dry Landscape Garden. Relax with a wide variety of drinks, including fragrant coffee or black tea, and delicious sweets.



Cafe 'Taikan'

● Cafe 'Taikan' is surrounded by the Pond Garden. In addition to cakes and sweets, meals such as Shimane-Beef curry are also available.



Tea House Juraku-an

● In Juraku-an, a traditional pure-gold kettle is used to boil water. Such gold kettles have long been regarded as auspicious symbols of good fortune that invite happiness and longevity.

TRAFFIC INFORMATIONS

AIRPLANE

50 min. from Yonago Airport to the museum by car
50 min. from Izumo Airport to the museum by car

Tokyo	80 min. to Yonago AP by ANA, 90 min. to Izumo AP by JAL
Osaka	60 min. to Izumo AP by JAC
Fukuoka	65 min. to Izumo AP by JAC

JR Train

20 min. from Yasugi Station to the museum by *Free shuttle bus

Tokyo	3 hr 25 min. to Okayama Sta. by SHINKANSEN
Osaka	45 min. to Okayama Sta. by SHINKANSEN
Nagoya	1 hr 40 min. to Okayama Sta. by SHINKANSEN
Fukuoka	1 hr 45 min. to Okayama Sta. by SHINKANSEN
Okayama	2 hr 20 min. to Yasugi Sta. by Limited Express YAKUMO (Change to Limited Express YAKUMO from SHINKANSEN)

Highway Bus

30 min. from Yonago Station to the museum by car

Tokyo	10 hr 45 min. to Yonago Sta.
Osaka	3 hr 30 min. to Yonago Sta.
Kyoto	4 hr 25 min. to Yonago Sta.
Hiroshima	3 hr 20 min. to Yonago Sta.

(Okayama, Fukuoka also available)

Car

10 min. from the Sanin Expressway, Yasugi IC exit.

Osaka	By the Chugoku Expressway, Yonago Motorway, and Sanin Motorway, 3 hr 30 min.
Hiroshima	By the Chugoku Expressway, Matsue Motorway, and Sanin Motorway, 2 hr 50 min.
Okayama	By the Okayama Expressway, Yonago Motorway, and Sanin Motorway, 2 hr 30 min.

● Admission (Tax Included) ●

(yen)

Categories	Single	Group (20 People or more)	Group (100 People or more)
Adults	2,300	1,900	1,700
University Students	1,800	1,500	1,300
High School Students	1,000	800	700
Elementary or Junior High School Students	500	400	300

Revised on April 1, 2014



[Free Shuttle Bus]

- Direct shuttle buses operate from JR Yasugi Station to the museum for free. Please feel free to use.
- Check the timetable for Free Shuttle Bus services on our Website. https://www.adachi-museum.or.jp/en/shuttle_bus