



# ADACHI MUSEUM OF ART



JAPAN

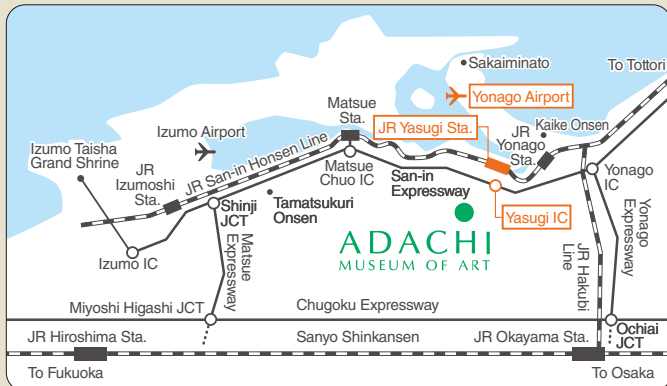
Shimane

## Hours

April - September / 9:00 - 17:30  
October - March / 9:00 - 17:00 · Open year round



Adachi Museum of Art  
International Tourist Information Desk



ADACHI MUSEUM OF ART

320 Furukawa-cho, Yasugi, Shimane 692-0064 TEL.+81-854-28-7111 FAX.+81-854-28-6733  
[Osaka Office] 2-4-3 Minamihonmachi, Chuo-ku, Osaka 541-0054 TEL.+81-6-6264-0737  
<https://www.adachi-museum.or.jp/en>

A Parking lot for cars and buses is available free of charge.



ADACHI MUSEUM OF ART

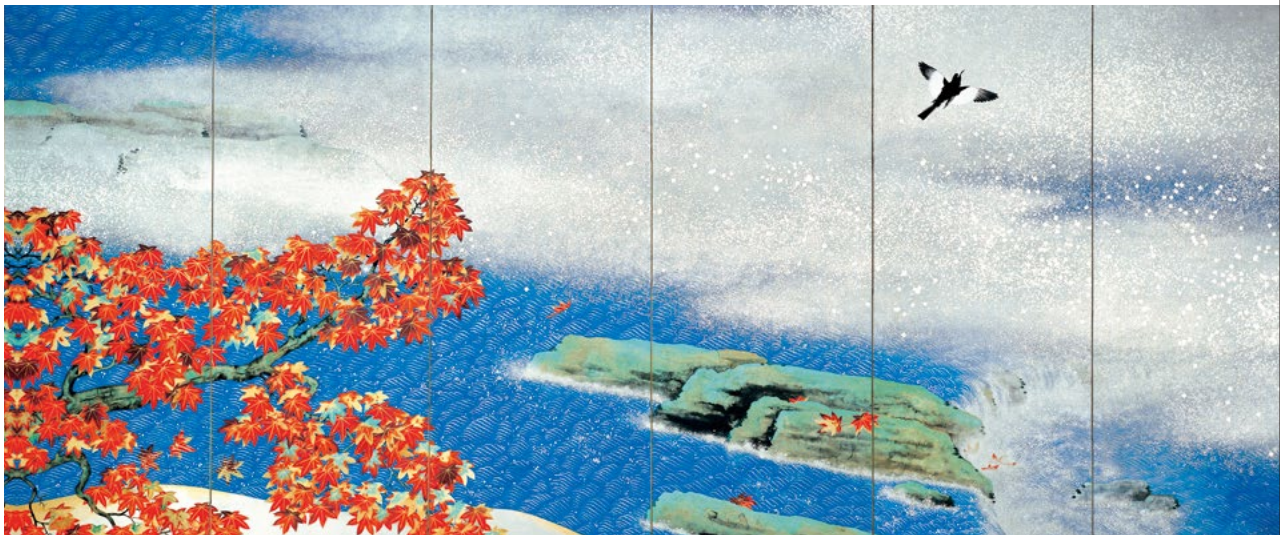
# *Time for the Grand Gardens, Time for the Great Paintings*

A moment to gaze and appreciate the changing of the colors from one season to another, against a backdrop of mountains with misty clouds. A moment to listen to the silence, being moved by masters' brush strokes. – When looking around, you may find yourself under a comfortable

illusion as if you entered into a living canvas. The expansive Japanese gardens covering 165,000 square meters and Japanese paintings by Yokoyama Taikan and other painters make for excellent harmony. Here flows the time of “ease,” in which you may feel like your heart is purified.



The Dry Landscape Garden in Spring



Yokoyama Taikan: Autumn Leaves (Right Screen 1931)



# Grand Gardens

## *Harmony between Natural Beauty and Japanese Paintings*

“A Japanese garden is thought of as a living canvas.”  
– These words by Adachi Zenko show his thoughts and passion toward gardening. And the 165,000 square meters of gardens convey them in a vivid manner. The Dry Landscape Garden, the Moss Garden, the Pond Garden, and the White Gravel and Pine Garden.....as you take each step, you can see a calm, elegant scene spreading in front of you. Combining with the Japanese paintings, it would calmly heal your heart. Azaleas bloom in spring, new leaves show their freshness in summer, red leaves add colors in autumn, and snow covers the gardens in winter. You can enjoy the aesthetics of the changing seasons throughout the year.



### **| Living Framed Painting**

A window itself has become a frame of a living picture. This is created by nature, changing itself in accordance with light and shades.

## **|庭園|日本|一|**

**The Journal of Japanese Gardening**

Adachi Museum's gardens have been ranked repeatedly as number one among Japan's approximately 1,000 gardens since 2003 by "Sukiya Living Magazine: The Journal of Japanese Gardening", a US magazine that focuses on Japanese gardens.

### **| The Dry Landscape Garden**

This is the museum's main garden, which shows a beautiful harmony with nature. The standing stone is arranged as a steep mountain, giving the impression of water flowing into a large, mighty river. It expresses a magnificent atmosphere of mountains and water.





## Features of the Gardens

### The White Gravel and Pine Garden

The atmosphere of *Beautiful Pine Beach*, a masterpiece by Yokoyama Taikan, is expressed in a delicate manner in this garden. Black pines in the right side and red pines in the left, which are arranged in contrast to each other, successfully create harmonious beauty.



### The Moss Garden

This graceful garden is arranged in the Kyoto style, mainly using haircap moss. The contrast is beautiful between white gravel and the greenery of the moss, which is mildly curved. In autumn, the red color of maple trees is added.



### The Kikaku Waterfall

This is an artificial waterfall of 15 meters in height, which was made under an image of Taikan's *suiboku-ga* work *Waterfall in Nachi*. The lively falling water gives the gardens a sense of motion and tensity.



### The Pond Garden

This is arranged with a new sensibility and a traditional gardening manner. The elegantly swimming carp give the viewer a feeling of ease.



### Living Hanging Scroll

The wall of *toko-no-ma* has been cut out into a window, as a frame of a living picture. You can see the garden through the window as if it were a hanging scroll of a natural landscape painting. This is one of the special features of the Adachi Museum.





# Great Paintings

## Major Works of Modern Japanese Painting Exhibited Together

Adachi Museum of Art houses about 2,000 works in total, including Japanese paintings, pottery, paintings for children and wood carvings. Our collection of modern Japanese paintings is especially expansive with numerous masterpieces by master painters, who flourished in the modern art circle, including Yokoyama Taikan, Takeuchi Seiho, Kawai Gyokudo, Uemura Shoen, Hashimoto Kansetsu, and Sakakibara Shiho. Their works are selected to display in accordance with seasonal appearances of the gardens. Particularly, the Taikan collection includes over 120 works, from which about 20 works are always displayed. We hope that you will enjoy the deep tastes of those masterpieces along with various appearances of the gardens.



Yokoyama Taikan: Mountain after a Shower (1940)



Yokoyama Taikan: Winter: Four Seasons of the sea (1940)



Yokoyama Taikan: Autumn Leaves (Left Screen 1931)



### Yokoyama Taikan (1868-1958)

Learning from Okakura Tenshin at the Tokyo Fine Art School, Taikan took part in the establishment of the Japan Art Institute with Tenshin, Hishida Shunso and others. There, he promoted the creation of a new-style Japanese painting. Later he re-established the Institute and brought forth numerous masterpieces. He was conspicuous in the world of *suiboku-ga* and thick-color painting, and built the foundation of the modern Japanese art world through the Meiji, Taisho and Showa Periods.



Yokoyama Taikan: Selflessness (1897)

## Major Works of The Museum's Collection



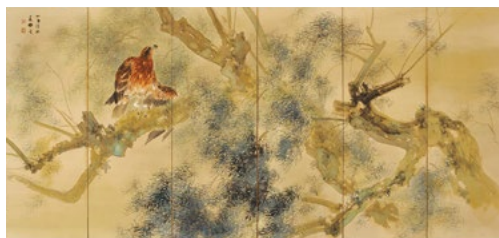
Uemura Shoen: Daughter Miyuki (1914)



Yasuda Yukihiko: Wang Zhaojun (1947)



Kawabata Ryushi: Passion (1934)



Takeuchi Seiho: After a Shower (Left Screen 1928)



Kobayashi Kokei: Yang Guifei (1951)



Sakakibara Shiho: Peonies (c.1938)



Hashimoto Kansetsu: Dogs from Europe  
(Right Screen c.1941)

## Major Artists of The Museum's Collection

Yokoyama Taikan  
Uemura Shoen  
Imamura Shiko  
Irie Hako  
Omoda Seiju

Takeuchi Seiho  
Ito Shinsui  
Kobayashi Kokei  
Nishiyama Suisho  
Maeda Seison

Hashimoto Kansetsu  
Kaburaki Kiyokata  
Yamamoto Shunkyo  
Kikuchi Keigetstu  
Yamaguchi Kayo

Sakakibara Shiho  
Terashima Shimei  
Tomioka Tessai  
Nishimura Goun

Kawai Gyokudo  
Hishida Shunso  
Tsuchida Bakusen  
Yasuda Yukihiko

Kawabata Ryushi  
Hayami Gyoshu  
Murakami Kagaku  
Tokuoka Shinsen

## The World of Paintings for Children

Paintings for children convey a gentle, heart-warming atmosphere. Takei Takeo, Kawakami Shiro, Hayashi Yoshio, Suzuki Toshio, Kurosaki Yoshisuke and Iguchi Bunshu painted for "Kinder Book" and other magazines for children. This corner always displays their works, which are made with abundant delicate sensibilities.



Hayashi Yoshio:  
Angel Taking a Nap



Hayashi Yoshio:  
Please Come Back Soon



Hayashi Yoshio:  
Good Brothers



Hayashi Yoshio:  
Four Seasons' Tree



# Rosanjin Hall

## *The Space of "Aesthetics" Created by The Master of Modern Ceramics*

Kitaoji Rosanjin is well-known as a rare cook and ceramist. Adachi Museum houses about 500 works by Rosanjin and always about 120 works of them in Rosanjin Hall, which opened in 2020.

Rosanjin showcased his abilities in various areas, including calligraphy, engraved calligraphy, ceramics, lacquerware and paintings. He enhanced the dining space into a realm of art, and finally established his own world of aesthetics. Rosanjin Hall was designed exclusively in order to appreciate his works. We hope that you will enjoy the attraction of Rosanjin works in the soft, gentle lighting.



### Kitaoji Rosanjin (1883-1959)

Rosanjin thought that excellent food should be served in an excellent dish and it is the true dining to have meal with an excellent hanging scroll and spirits of flowers put in an appropriate vase surrounding. From this idea, he turned his hand to ceramics, and owned a private restaurant, *Hoshigaoka-saryo*, which reached the ultimate in taste, quality and style. He succeeded in the establishment of a total aesthetic world that surrounded cooking.



Bowl with Design of  
Camellias (c.1940)



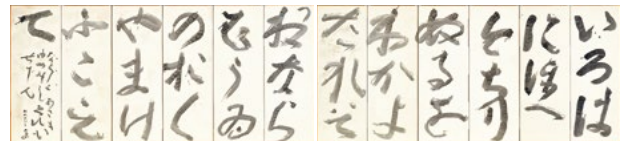
Jar in Overglaze  
Enamel and Gold (c.1940)



Basket-Style Vase,  
Oribe Type (c.1950)



Engraved Calligraphy (1913)



Folding Screen with Iroha-Uta (Japanese ancient kana order) (1953)



# Annex

## *Enjoy The Aesthetics of Contemporary Japanese Paintings*

Adachi Museum focuses on modern Japanese painters of Japan Art Institute (Inten), which Yokoyama Taikan and others established and made efforts to re-establish, while it endeavors to collect contemporary Japanese paintings. The museum houses about 350 excellent works by today's representative Japanese painters, and displays them in Annex. It also holds "Inten" and "Spring Inten" every year, exhibiting Inten award-winning or new works by members of Inten. Please enjoy the beauty of the contemporary Japanese paintings after enjoying that of the modern Japanese painting.

### The Adachi Museum of Art Award

Adachi Museum established the "Adachi Museum of Art Award" in 1995, hoping to help to develop the Japanese art and to nurture prospective painters of Japanese painting. It selects and buy excellent one appropriate for the museum from the works of Inten, which is held every autumn. In 2005, the museum also established the "Spring Adachi Museum of Art Award" in Spring Inten.



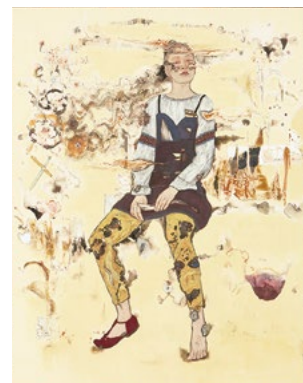
Miyasako Masaaki: Phase Space (2017)



Miyakita Chiori: Calm Prayer (2019)



Matsuo Toshio:  
Good Bye, Venice (2013)



Kunishi Hanako:  
Sound of Invisible Things (2016)  
【22nd Adachi Museum  
of Art Award winner】





## Museum Information

### ► Museum Shop (Main Building)

Impressions by great gardens and paintings will last forever. This shop sells original goods, including post cards, *shikishi*, reproductions, and art books. They are made with the motifs of the gardens and the works of the museum. None of these works can be found anywhere else.



### ► Museum Shop (Annex)

This shop, which is on the first floor of Annex, stands in a modern, yet traditional Japanese style. It has a wide variety of goods based on the contemporary Japanese painting, ceramics, reproductions and snacks and sweets.



### ► Café Midori

This café offers a grand view of the Dry Landscape Garden through large windows. Please take some time to relax here. Coffee, tea, and sweets are served here.



### ► Café Taikan

This café is surrounded by the Pond Garden. It is an open space, allowing the sunshine to pour into the room. The menu includes not only drinks and sweets, but also Shimane-Beef curry and other meals.



### ► Tea House Juraku-an

This tea house offers matcha with hot water boiled in a pure-gold kettle, which has been said to be good for bringing happiness and longevity. You can see the garden as a pair of living hanging scrolls, while sitting in the chairs.



## Traffic Informations

**AIRPLANE** 45 min. from Yonago Airport to the museum by car  
50 min. from Izumo Airport to the museum by car

Tokyo	80 min. to Yonago AP by ANA, 90 min. to Izumo AP by JAL
Nagoya	60 min. to Izumo AP by FDA
Osaka	50 min. to Izumo AP by J-AIR
Fukuoka	65 min. to Izumo AP by JAC

**JR Train** 20 min. from Yasugi Station to the museum by \*Free shuttle bus

Tokyo	3 hr 20 min. to Okayama Sta. by SHINKANSEN
Osaka	50 min. to Okayama Sta. by SHINKANSEN
Nagoya	1 hr 40 min. to Okayama Sta. by SHINKANSEN
Fukuoka	1 hr 45 min. to Okayama Sta. by SHINKANSEN
Okayama	2 hr 20 min. to Yasugi Sta. by Limited Express YAKUMO (Change to Limited Express YAKUMO from SHINKANSEN)

**Highway Bus** 30 min. from Yonago Station to the museum by car

Osaka	3 hr 30 min. to Yonago Sta.
Kyoto	4 hr 30 min. to Yonago Sta.
Hiroshima	3 hr 30 min. to Yonago Sta.
Okayama	2 hr 30 min. to Yonago Sta.

**Car** 10 min. from the Sanin Expressway, Yasugi IC exit.

Osaka	By the Chugoku Expressway, Yonago Motorway, and Sanin Motorway, 3 hr 30 min.
Hiroshima	By the Chugoku Expressway, Matsue Motorway, and Sanin Motorway, 2 hr 50 min.
Okayama	By the Okayama Expressway, Yonago Motorway, and Sanin Motorway, 2 hr 30 min.

## Admission (Tax Included)

(yen)

Categories	Single	Group (20 People or more)
Adults	2,500	2,200
University Students	2,000	1,700
High School Students	1,000	800
Elementary or Junior High School Students	500	400

Revised on April 1, 2025



### [Free Shuttle Bus]

- ◎ Direct shuttle buses operate from JR Yasugi Station to the museum for free. Please feel free to use.
- ◎ Check the timetable for Free Shuttle Bus services on our Website. [https://www.adachi-museum.or.jp/en/shuttle\\_bus](https://www.adachi-museum.or.jp/en/shuttle_bus)